

KUDU™ Series 88 Full Length Hoop Set (#BRX02393)

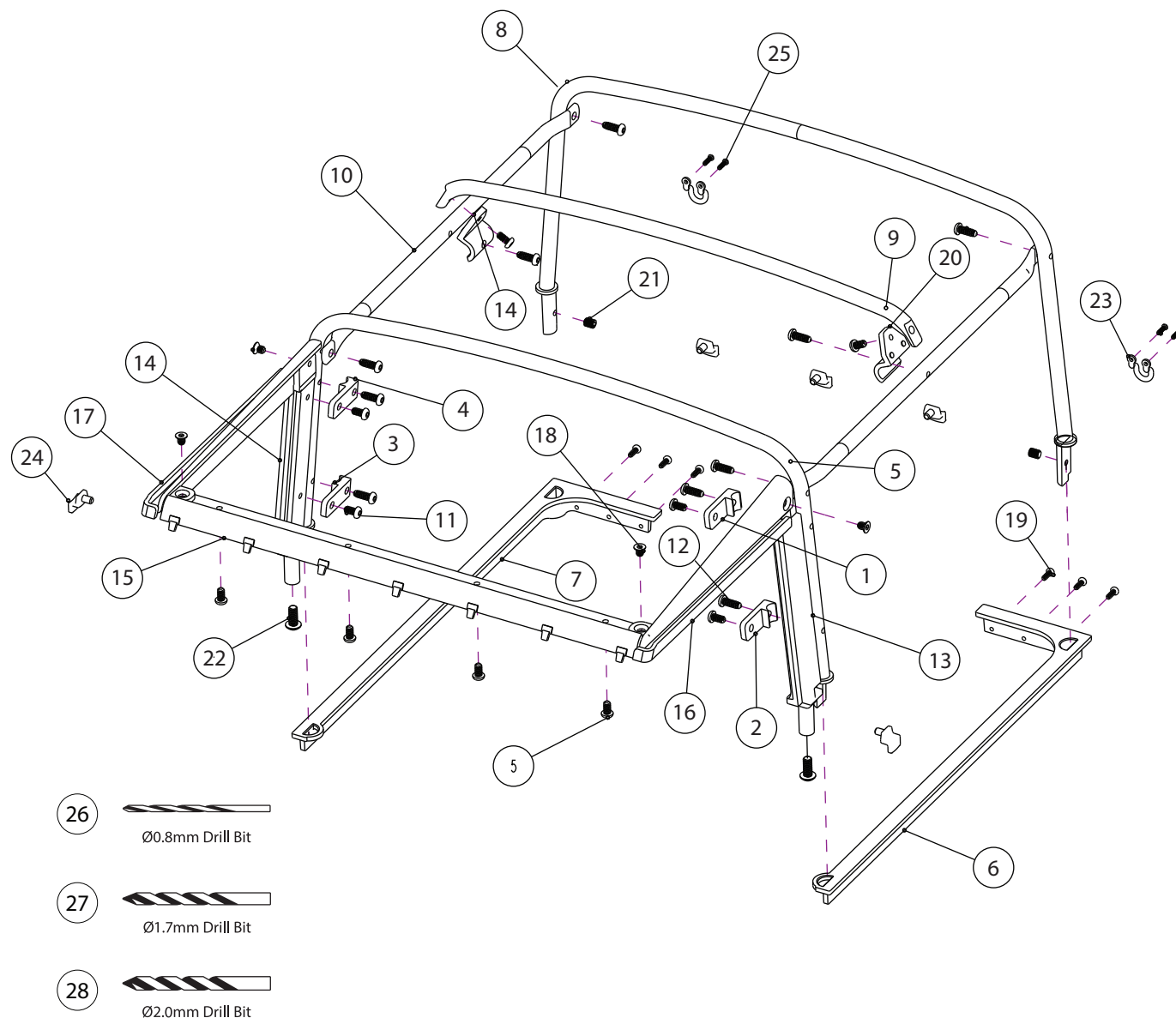
Difficulty Level: ★★☆☆☆

INSTALLATION MANUAL

For best results, we recommend to paint everything first before gluing and assembly.

Parts Included:

	Qty.
(1) Hoop Retainer	1
(2) Hoop Retainer	1
(3) Hoop Retainer	1
(4) Hoop Retainer	1
(5) Front Hoop Alum	1
(6) Hoop Mount	1
(7) Hoop Mount	1
(8) Rear Hoop Alum	1
(9) Center Hood Stick Alum	1
(10) Horizontal Tie Bar Alum for Series 88	2
(11) M2 x 4 RS Screw	8
(12) M2 x 6 RS Screw	10
(13) Drain Channel Left Door Top Alum	1
(14) Drain Channel Right Door Post Alum	1
(15) Header Rail Alum	1
(16) Drain Channel Left Door Post Alum	1
(17) Drain Channel Right Door Top Alum	1
(18) M2 x 3 CSS Screw	4
(19) ST1.5 x 4 RS Screw	6
(20) Hood Stick Bracket	2
(21) M2.5 x 3 Set Screw	2
(22) M2.5 x 6 RS Screw	2
(23) Metal Rear Loop Tie Down	2
(24) Tie Down Cleat	5
(25) ST1 x 4 RS Screw	4
(26) Ø0.8mm Drill Bit	1
(27) Ø1.7mm Drill Bit	1
(28) Ø2.0mm Drill Bit	1
(29) Canvas Soft Top	1



KUDU™ Series 88 Full Length Hoop Set (#BRX02393)

Difficulty Level: ★★☆☆



**Scan or visit product page for
canvas installation video**

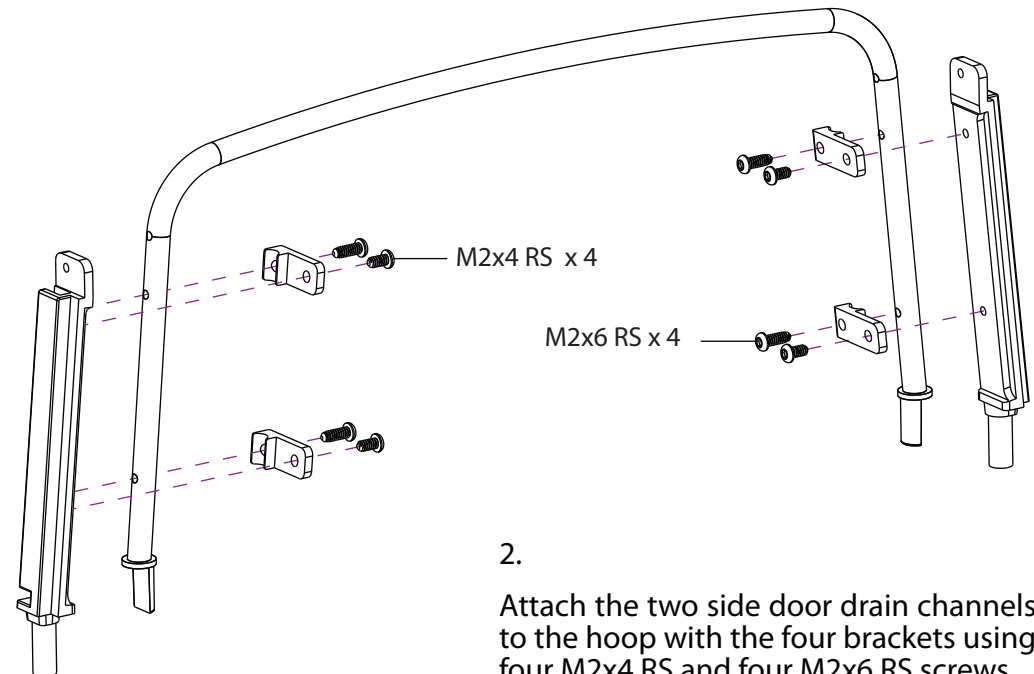
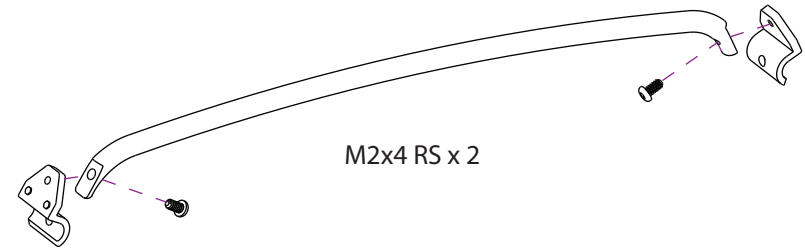
Note that before you install the cage, we recommend you scan the QR code to watch the video. There are some steps for the soft top that have to be done first before the cage is installed onto the body if you wish to have the soft top on.



Painting or dyeing the soft top fabric with certain materials may cause shrinkage.

1.

Attach the two hood stick brackets to the hood stick using two M2x4 RS Screw.

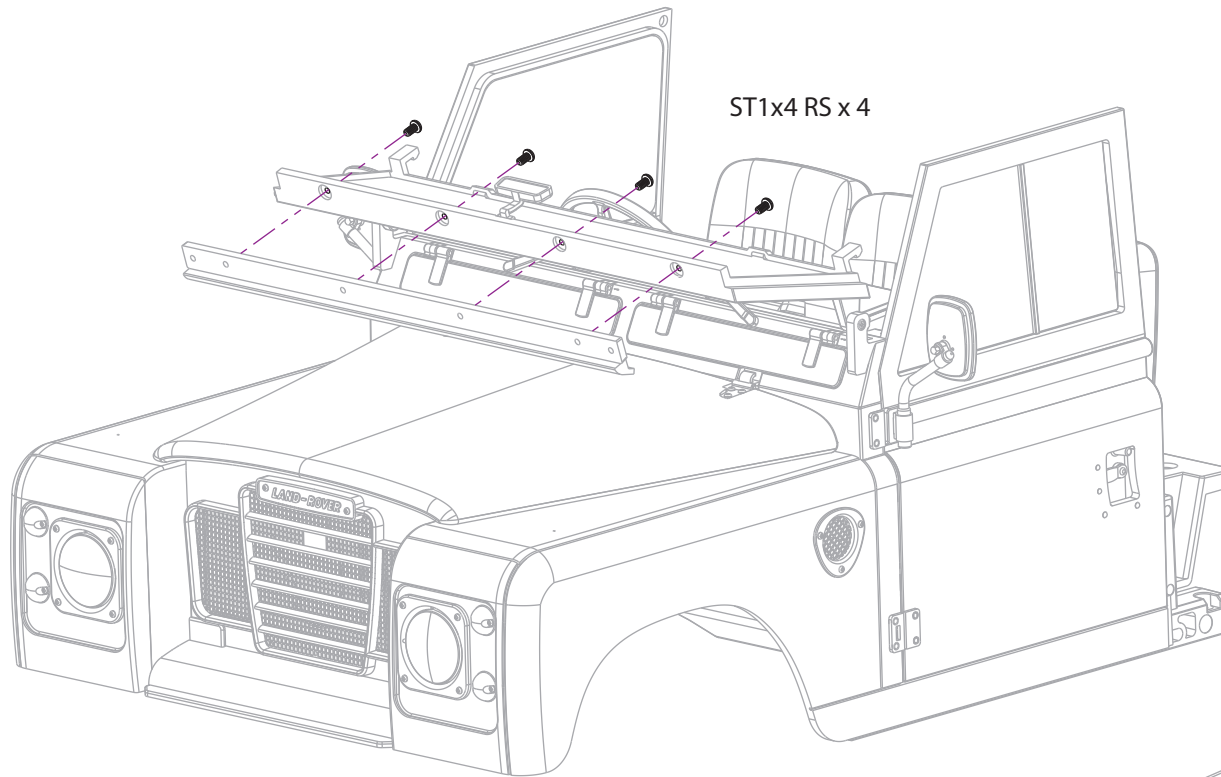


2.

Attach the two side door drain channels to the hoop with the four brackets using four M2x4 RS and four M2x6 RS screws.

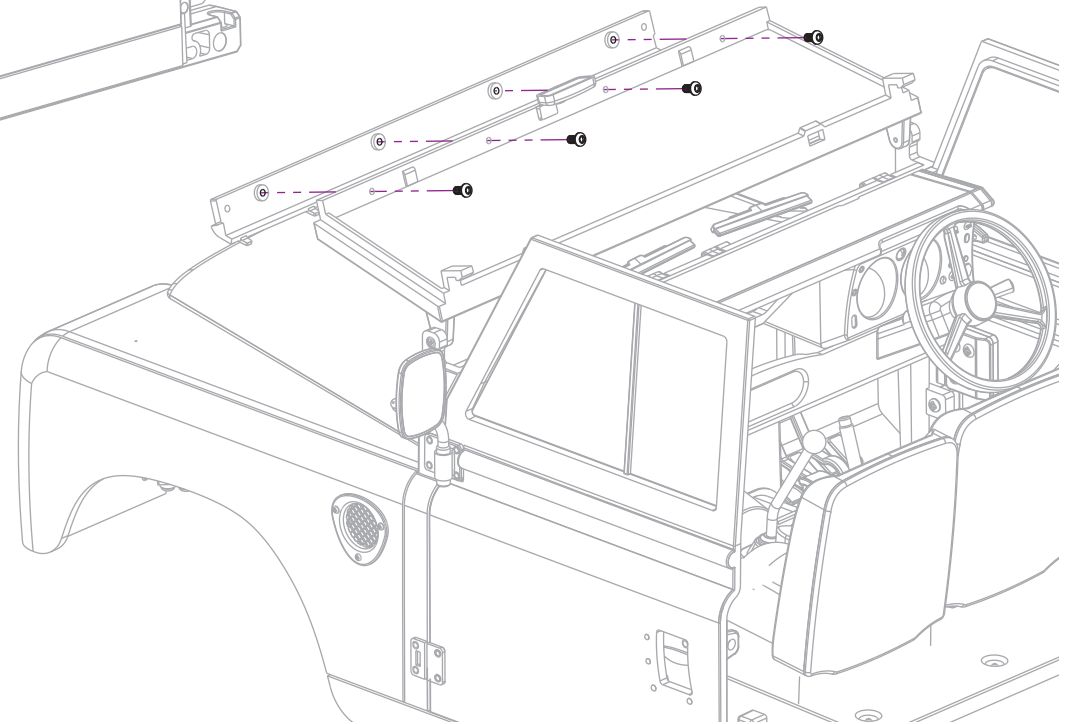
KUDU™ Series 88 Full Length Hoop Set (#BRX02393)

Difficulty Level: ★★☆☆☆



3.

Attach the header rail to the front screen using four ST1x4 RS screws.



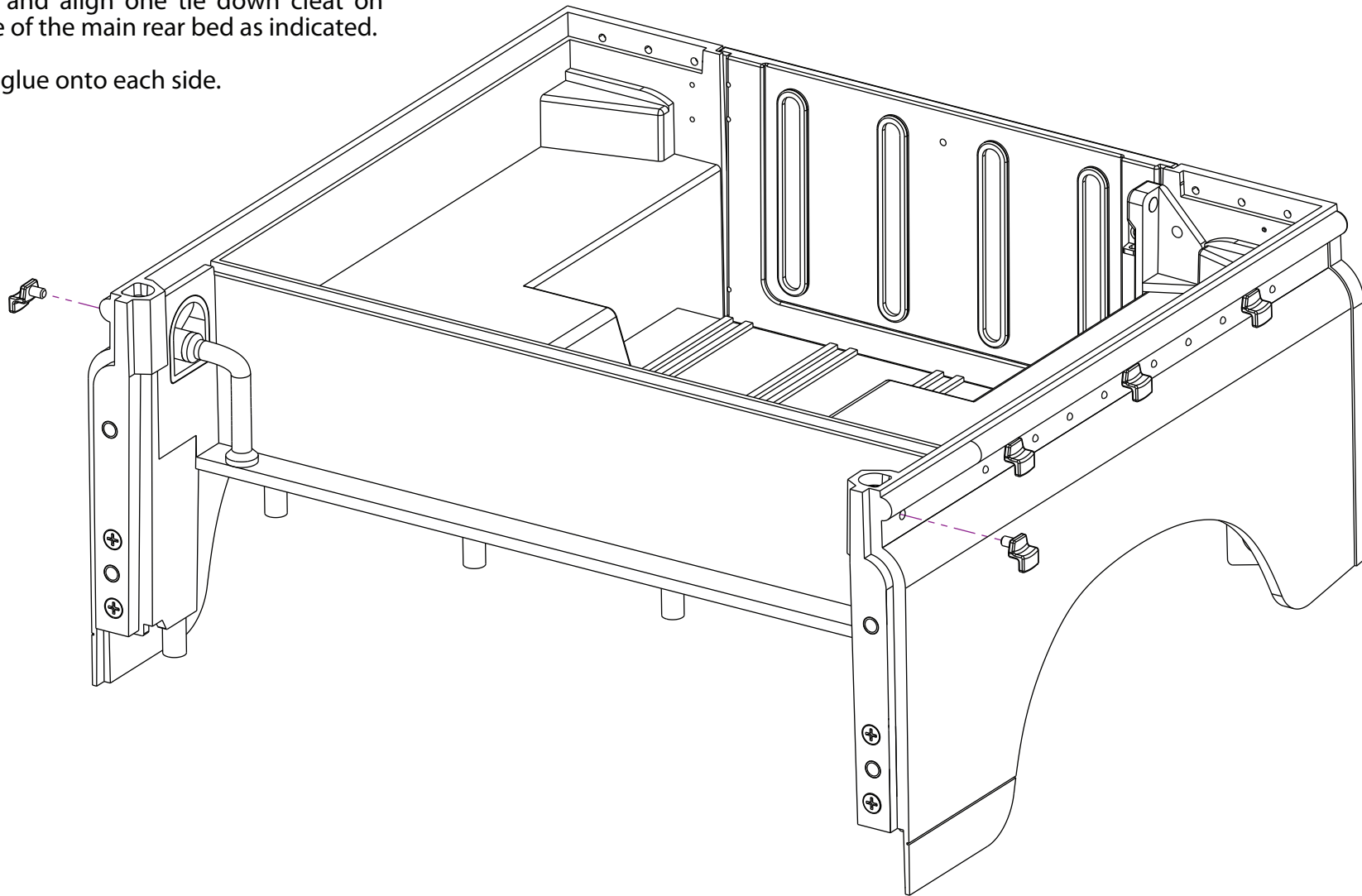
KUDU™ Series 88 Full Length Hoop Set (#BRX02393)

Difficulty Level: ★★☆☆☆

4.

Measure and align one tie down cleat on each side of the main rear bed as indicated.

Drill and glue onto each side.



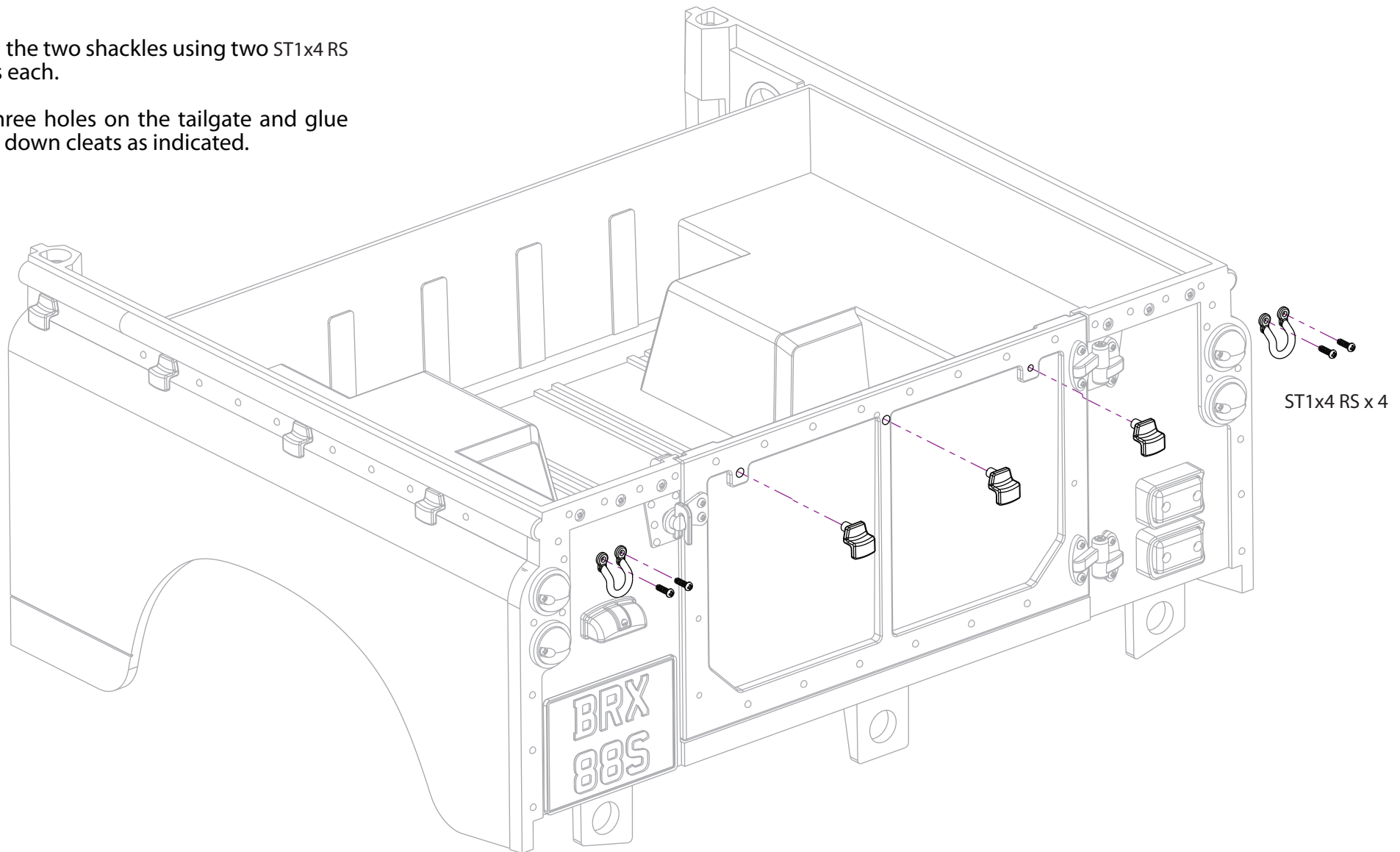
KUDU™ Series 88 Full Length Hoop Set (#BRX02393)

Difficulty Level: ★★☆☆

5.

Attach the two shackles using two ST1x4 RS screws each.

Drill three holes on the tailgate and glue the tie down cleats as indicated.

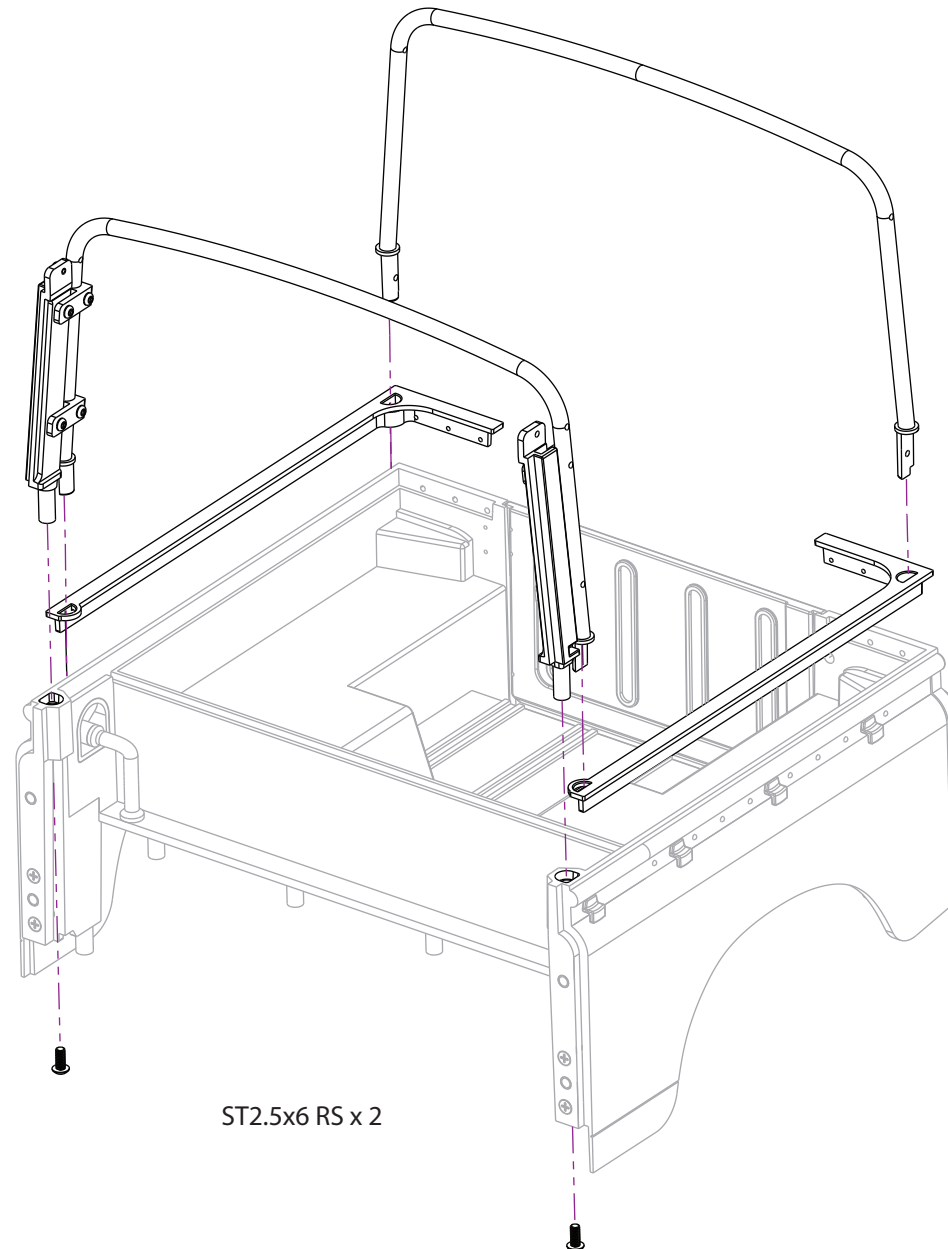


KUDU™ Series 88 Full Length Hoop Set (#BRX02393)

Difficulty Level: ★★☆☆☆

6.

Insert the hoop assembly and rear hoop through the hoop mount and attach two ST2.5x6 RS screws.



ST2.5x6 RS x 2

KUDU™ Series 88 Full Length Hoop Set (#BRX02393)

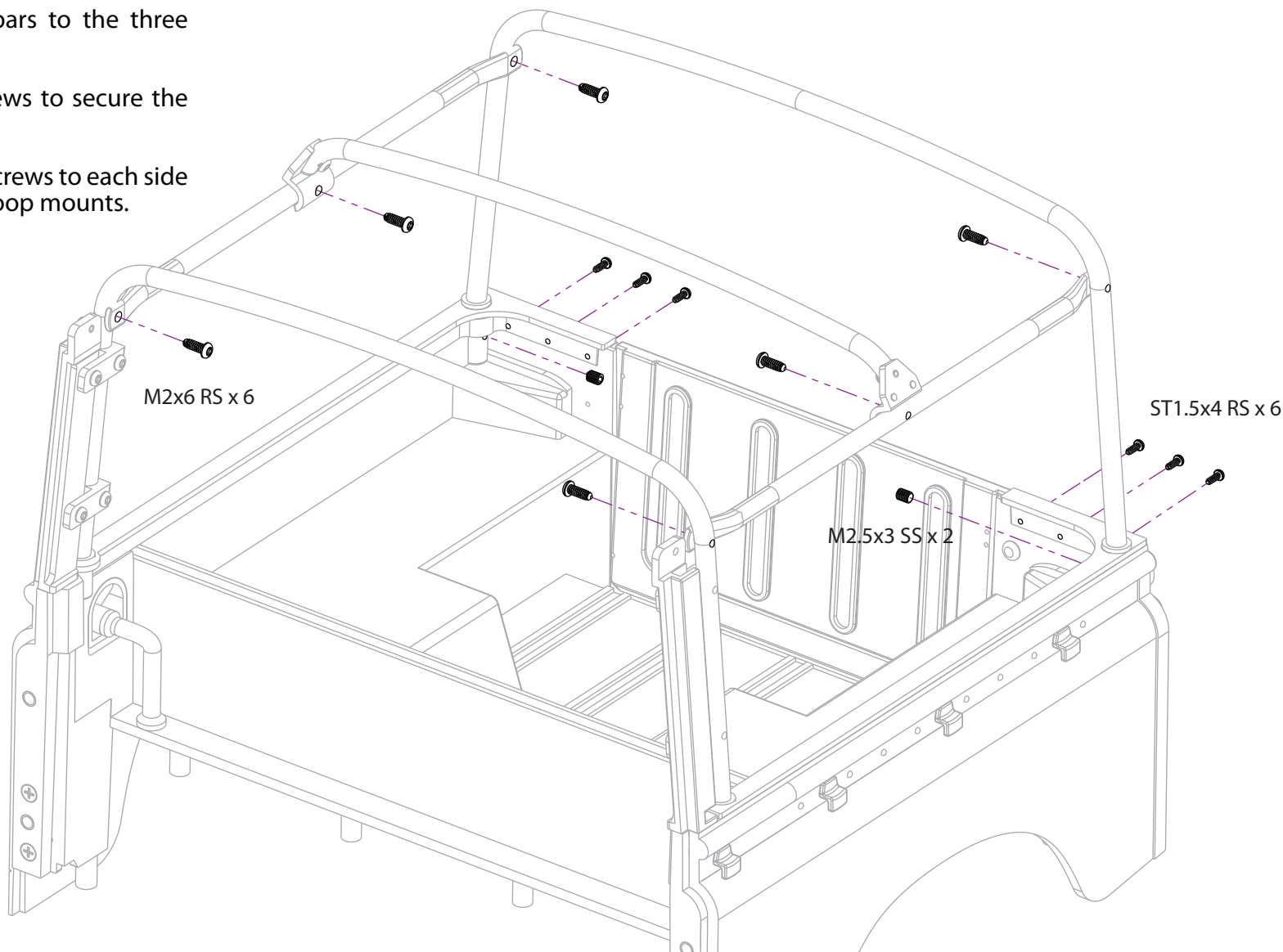
Difficulty Level: ★★☆☆☆

7.

Attach the two horizontal tie bars to the three hoops using six M2x6 RS screws.

Next, attach two M2.5x3 SS screws to secure the rear hoop.

Finally, attach three ST1.5x4 RS screws to each side of the rear panel to secure the hoop mounts.

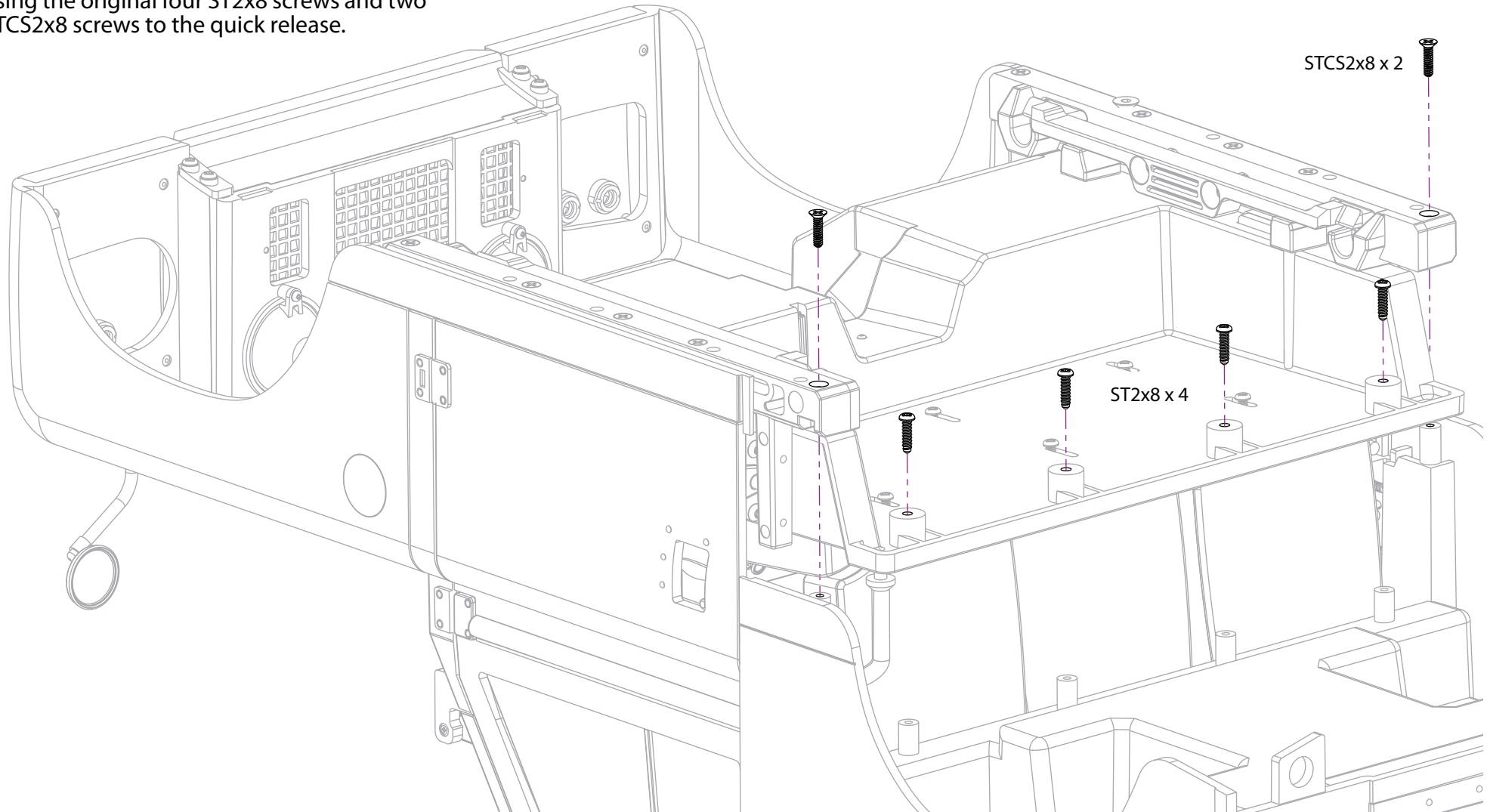


KUDU™ Series 88 Full Length Hoop Set (#BRX02393)

Difficulty Level: ★★☆☆☆

8.

Re-attach the rear bed to the main cab body using the original four ST2x8 screws and two STCS2x8 screws to the quick release.

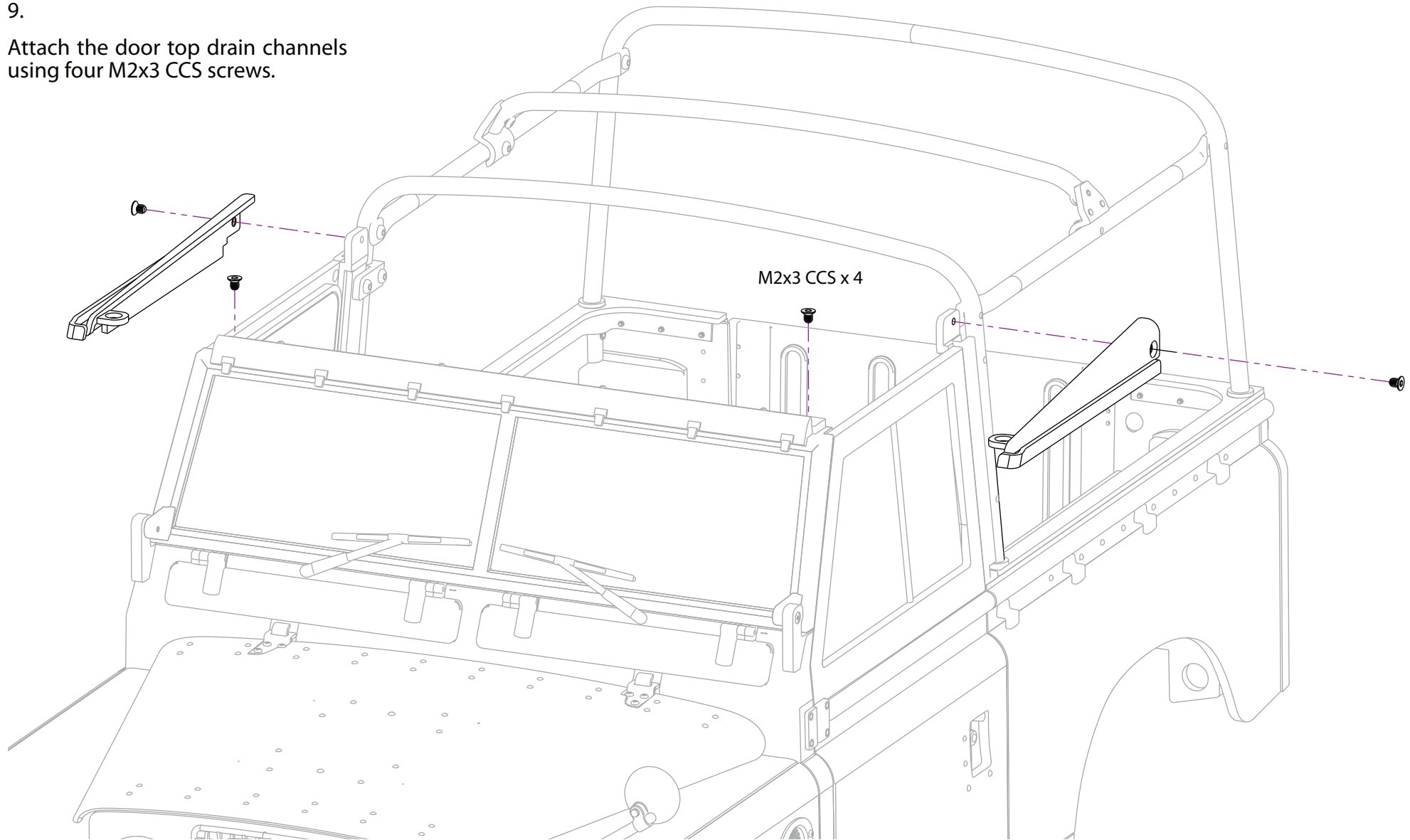


KUDU™ Series 88 Full Length Hoop Set (#BRX02393)

Difficulty Level: ★★☆☆☆

9.

Attach the door top drain channels using four M2x3 CCS screws.



KUDU™ Series 88 Full Length Hoop Set (#BRX02393)

Difficulty Level: ★★☆☆☆

